



SOUTHGATE

ESTATES

Room 2, 3 Oak Close, North Street,
Heavitree, Exeter, Devon, EX1 2RQ
£625pcm



Heavitree location, Double En Suite Bedroom in Shared House, Communal Living Areas, Close to City Centre, Shops & Bus Routes

Single occupancy only, professional house share. All Utilities, WiFi and Council Tax Included. First floor FURNISHED en-suite double bedroom in the highly popular area of Heavitree. The property is within close proximity of the local shops, doctors' surgery, supermarkets and the RD&E Hospital. This popular position also benefits from good access to Exeter city centre, the M5 Motorway, the Met Office and Pynes Hill Business Park. Tenants benefit from access to a communal living room, kitchen, shower / utility room and a bathroom. There is also a low maintenance rear garden.

No Pets

No Smokers

Minimum 6 Month Let

Subject to Satisfactory Credit Referencing and Affordability Checks



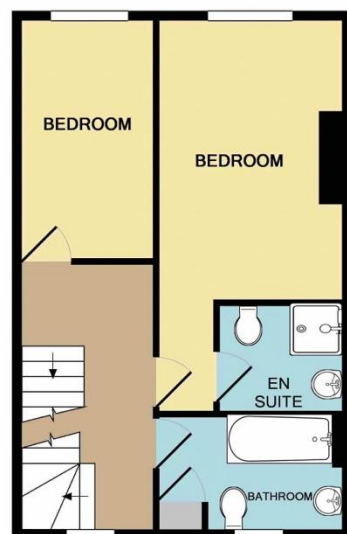
Room 2 A good-sized double bedroom including a radiator, double bed, desk unit, a double wardrobe, tall set of 4 drawers and a small 2 drawer unit and a lamp. A uPVC double glazed window faces the front aspect.

En Suite Comprising a close-coupled WC, pedestal wash hand basin, part-tiled walls and shower cubicle. The en suite is private with use only for room 2.

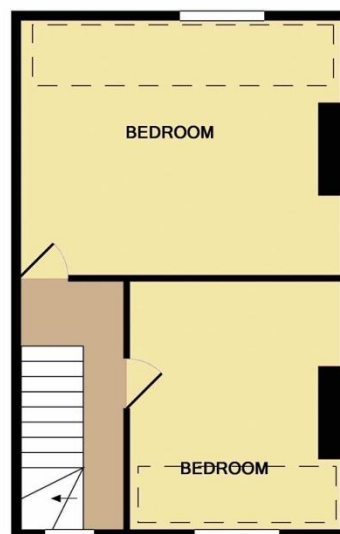




GROUND FLOOR



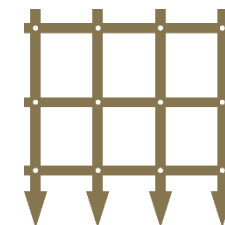
1ST FLOOR



2ND FLOOR

Whilst every attempt has been made to ensure the accuracy of the floor plan contained here, measurements of doors, windows, rooms and any other items are approximate and no responsibility is taken for any error, omission, or mis-statement. This plan is for illustrative purposes only and should be used as such by any prospective purchaser. The services, systems and appliances shown have not been tested and no guarantee as to their operability or efficiency can be given
Made with Metropix ©2019

Score	Energy rating	Current	Potential
92+	A		
81-91	B		82 B
69-80	C		
55-68	D	58 D	
39-54	E		
21-38	F		
1-20	G		



www.tpos.co.uk

Note: these particulars are not to be regarded as part of a contract. None of the statements made in these particulars are to be relied upon as statements or representation of fact. Any intending purchaser must satisfy themselves by inspection or otherwise as to the correctness of each of the statements contained in these particulars. The vendor does not make or give, and neither the agents nor any person in their employment has any authority to make or give any representation or warranty in relation to this property.

Southgate Estates

50-51 South Street, EX1 1EE

01392 207444

info@southgateestates.co.uk
southgateestates.co.uk